



Leader of Resource Recycling Loading and Unloading Transport Vehicles

More Resources Recycling Loading Equipment Please Pay Attention



Xuzhou Fuman Special Vehicle Co., LTD

Add: shengyang Industrial Park, Sanbao Street, Xuzhou High Tech Industrial Development Zone

(Tel):(0086)0516-83318158

(Fax):(0086)0516-83318158

(E-mail):marketing@xzfuman.com

www.xzfuman.com For More Details, Please Visit The Official Website

All specifications are subject to change without notice



AI CRANE SERIES

Intelligent Loading Crane
Catch steel (material) Crane
Forestry (bamboo) Crane

Leader of Resource Recycling Loading
and Unloading Transport Vehicles

Forman Liberation Integrated Loading And
Unloading Truck Creates Value For
Resource Recovery Customers

Xuzhou Fuman Special Vehicle Co., LTD



Patented product Counterfeiting
will be prosecuted



ENTERPRISE PROFILE

» Xuzhou Fuman Special Vehicle Co., LTD

徐州福曼专用车有限公司(以下简称徐州福曼),公司坐落于工程机械之都-江苏省徐州市,公司占地40亩,厂房面积16000平方米。公司始创于2010年,现旗下有三家子公司,分别是徐州福曼随车起重机有限公司,徐州福曼耀迪工程机械有限公司,徐州福曼国际贸易有限公司。公司主要经营产品是随车起重机及整车、随车抓钢机及整车、随车抓木(竹)起重机及整车、港口起重机、船用起重机、轨道起重机、皮卡起重机、定制钢结构等相关产品,根据客户要求定制相关变形产品,提供解决方案。产品已广泛应用在隧道施工、物流、石油装备、港口起重、船舶制造、环卫、市政维修、园林养护、铁路轨道、消防装备等领域。

公司拥有一流的技术研发队伍、雄厚的技术创新和产品开发能力,突出“安全、环保、时尚、领先”的产品研发理念,构筑了以三维设计系统、具有自主知识产权的力学分析系统和模块化专家库为标志的产品研发平台,牢牢地占领了产品的技术制高点,从而引领行业发展趋向,促进行业健康、持续发展。

徐州福曼秉承“真诚、稳妥、创新、合作”的企业精神,从公司成立之初,就从产品的设计、采购、制造、检测、服务等各方面制订了严格的质量体系要求,并以打造中国随车起重机行业“领先产品,超值服务”作为公司的发展战略。

福曼先后投资百万元巨资积极与意大利、瑞典等世界一流随车起重机企业进行了深层次的技术交流与合作,使福曼的产品设计达到了国际水平,同时,福曼在率先获得了国家随车起重机“型式试验”制造许可并通过ISO9001质量体系认证的基础上,参考了国外公司在采购、制造、检测、销售、服务等方面的先进管理经验,并借助计算机信息技术建立了福曼公司高效、科学、完善的集采购、制造、过程控制、销售、客户服务等集成信息化管理系统,形成了严格的质量管理体系,使福曼随车起重机产品“由前到后”(从产品的采购、检验到产品的制造、检测)、由“由外到内”(产品的外观与产品的内在质量)均以“精品”姿态展现于客户、服务于客户。福曼始终站在客户的立场对待产品出现的任何问题,并始终把“客户满意”作为衡量产品质量与服务的唯一标准。福曼诚信客户,尊重市场,愿意与每一用户携手并进、共荣共利、共同发展!

Xuzhou Fuman Special Vehicle Co., Ltd. (hereinafter referred to as Xuzhou Fuman), the company is located in Xuzhou City, Jiangsu Province, the capital of construction machinery. The company covers an area of 40 acres, plant area of 16,000 square meters. Xuzhou Fuman was founded in 2010 and now has three subsidiaries, namely Xuzhou Fuman Truck Crane Co., Ltd., Xuzhou Fuman Yaodi Construction Machinery Co., Ltd., and Xuzhou Fuman International Trade Co., Ltd. The company's main products are truck-mounted cranes and vehicles, truck-mounted steel grabbing machines and vehicles, truck-mounted wooden (bamboo) cranes and vehicles, port cranes, marine cranes, rail cranes, pickup cranes, customized steel structures and other related products. Xuzhou Fuman customizes related deformation products and provides solutions according to customer requirements. The products have been widely used in tunnel construction, logistics, petroleum equipment, port lifting, shipbuilding, sanitation, municipal maintenance, garden maintenance, railway tracks, fire-fighting equipment and other related fields.

Xuzhou Fuman has a first-class technical research and development team, with strong technological innovation and product development capabilities. The company's product research and development concept highlights "safety, environmental protection, fashion and leadership". Xuzhou Fuman has built a product research and development platform marked by a three-dimensional design system, a mechanical analysis system with independent intellectual property rights and a modular expert database, firmly occupying the technical commanding heights of products, thereby leading the industry development trend and promoting the healthy and sustainable development of the industry.

Xuzhou Fuman adheres to the enterprise spirit of "sincerity, stability, innovation and cooperation". From the beginning of the company's establishment, it has formulated strict quality system requirements from product design, procurement, manufacturing, testing, service and other aspects. The company takes building "leading products and value-added services" in China's truck-mounted crane industry as the company's development strategy.

Xuzhou Fuman has invested millions of Yuan in in-depth technical exchanges and cooperation with world-class truck-mounted crane companies from Italy, Sweden, etc., so that Fuman's product design has reached the international level. At the same time, Xuzhou Fuman took the lead in obtaining the national truck-mounted crane "type test" manufacturing license and passed the ISO9001 quality system certification. On this basis, the company refers to the advanced management experience of foreign companies in procurement, manufacturing, testing, sales, service, etc., and with the help of computer information technology, the company has established an efficient, scientific and perfect integrated information management system integrating procurement, manufacturing, process control, sales and customer service. The company has formed a strict quality management system, so that Fuman truck-mounted crane products are displayed in customers and serve customers with a "high-quality" attitude, "from front to back" (from product procurement, inspection to product manufacturing, testing) and "from outside to inside" (the appearance of the product and the internal quality of the product). Xuzhou Fuman always stands in the customer's position to treat any problems with the products, and always takes "customer satisfaction" as the only criterion to measure product quality and service. Xuzhou Fuman treats customers with integrity, respects the market, and is willing to go hand in hand with every user to achieve common prosperity and development!

Fuman Jiefang Integrated Truck-mounted Steel Grabbing Machine

Product introduction

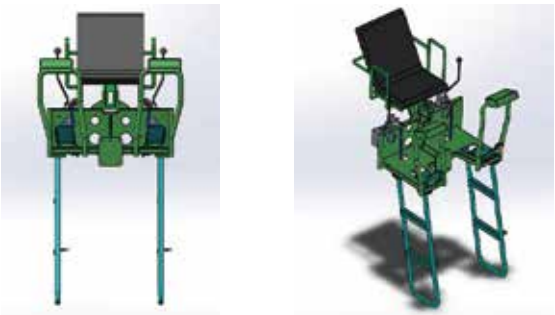
The vehicle-mounted steel (material) grab truck is a safe and efficient special loading and unloading truck, suitable for resource recovery, steel, paper scraps, forestry, dangerous goods and other industries, reducing the shortage of manpower and loading and unloading intensity, improving the efficiency of loading and unloading trucks, saving time and manpower, fast loading and unloading transfer.

Products selected China FAW Jiefang chassis, engine power, low fuel consumption, stable and reliable performance. Liberation after-sales 4S service station number, a wide range of areas (within 200 km).

Product advantages

- Forman steel grab machine imported foreign technology, compact structure, light weight, reasonable and beautiful design.
- Control system: the steel grab machine adopts load-sensitive multi-way control valve, which can realize multiple actions at the same time compound linkage action, better controllability, more accurate grab, greatly improve loading and unloading efficiency and save costs.
- Oil pump: steel grabbing machine adopts imported inclined shaft plunger oil pump, stable operation, high efficiency and long service life.
- Double rack oil cylinder is adopted for rotation of steel grabbing machine, which has large torque, stable rotation, better impact resistance, long service life and more convenient maintenance.
- The hydraulic clamp of steel grabbing machine adopts six-petal form, with 360° continuous rotation, the clamp opening is large, the arc shape reduces the resistance of the clamp and scrap iron, the position of the gripping teeth increases wear-resistant steel, and the six-petal semi-closed grab can easily grab large pieces and loose pieces, so that the grab is more labor-saving and the service life is longer. At the same time, the grab cylinder adopts built-in installation to prevent collision and better protection.
- The leg of the steel grab machine adopts square box type, which has stronger torsion resistance when working, better protects the stability of the automobile girder and the whole vehicle, and ensures safety.

Operating system



Product application



Jiefang Automobile Chassis Parameters

Forman Liberation Integrated Steel Grasping Machine (Single Bridge)

Total mass (Kg)	18000	Outline Size (mm)	9000x2550x3950	Engine	Diesel Engine 240 Horsepower	Axle load	Front Axle 5 Tons Rear Axle 10
Rated Load (Kg)	6500	Container Size (mm)	5950x2450x600	Speed Changing Box	Fast 8th Gear (High And Low)	Girder	288 Girder (Through The Third Floor)
Curb Weight (Kg)	11500	Number Of Passengers In The Cab	2	Tyre	10:00r20 Steel Tire	Automatic Air-Conditioning	Air Damping Seat

Forman Liberation Integrated Steel Grasping Machine (Rear Double Bridge)

Total mass (Kg)	25000	Outline size (mm)	12000 x2550x3970	Engine	Diesel engine 280 horsepower	Axle Load	Front Axle 5.5 Tons Rear Double Axle 11.5 Tons
Rated Load (Kg)	9870	Container Size (mm)	8450x2450x600	Speed Changing Box	Fast 10 (High And Low)	Girder	312 Girder (Through The Third Floor)
Curb Weight (Kg)	15000	Number Of Passengers In The Cab	3	Engine	11:00R20 Steel Tire	Automatic Air-Conditioning	Air Damping Seat

Forman Lib eration Integrated Steel Grasping Machine (First Four and Last Eight)

Total mass (Kg)	31000	Outline size (mm)	12000x2550x3980	Engine	Big Diesel 320 Horsepower	Axle Load	6500/6500/18000
Rated load (Kg)	14370	Container size (mm)	8450x2450x600	Speed Changing Box	Fast 10 (High And Low)	Girder	312 Girder (Through The Third Floor)
Curb Weight (Kg)	16000	Number Of Passengers In The Cab	3	Tyre	11:00R20 Steel Tire	Automa Tic Air-Conditioning	Air Damping Seat

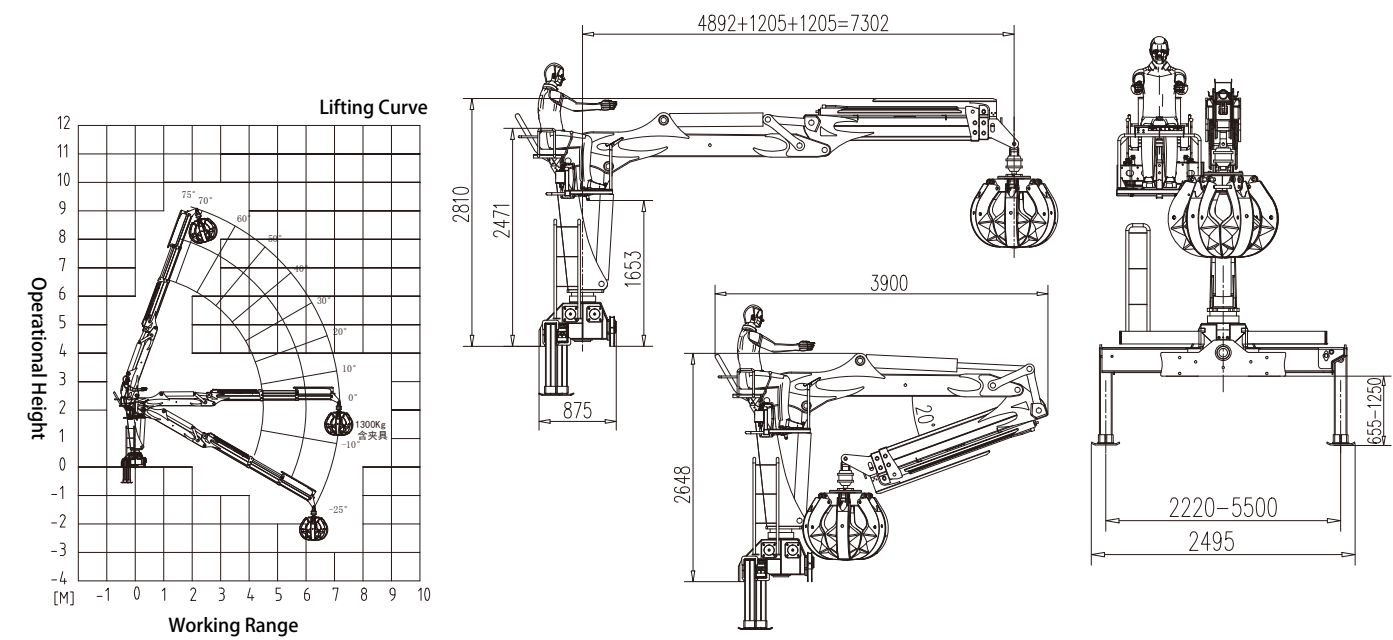
Forman Liberation Integrated Steel Grasping Machine (Export Country Five Rear Double Bridges)

Total Mass (Kg)	25000	Outline Size (mm)	9696x2504x	Engine	Big Diesel 375 Horsepower	Axle Load	Front Axle 5.5 Tons Rear Double Axle 11.5 Tons
Rated Load (Kg)	6740	Container Size (mm)	5650x2300x2100	Speed Changing Box	Fast 10 (High And Low)	Girder	312 Girder (Through The Third Floor)
Curb Weight (Kg)	18260	Number Of Passengers In The Cab	3	Tyre	11:00R20 Steel Tire	Automa Tic Air-Conditioning	Air Damping Seat

ZT Series Steel (Material) Machine Parameters

Maximum Lifting Capacity (Including Fixtures)	1300 Kg	Fuel Tank Capacity	160 L
Maximum Lifting Torque	12 Ton.m	Rotation Angle	380 °
Recommended Power	25 KW	Crane Dead Weight	2250 Kg
Hydraulic System Flow	60 L/Min	Installation Space	900 mm
Hydraulic System Pressure	27 Mpa		

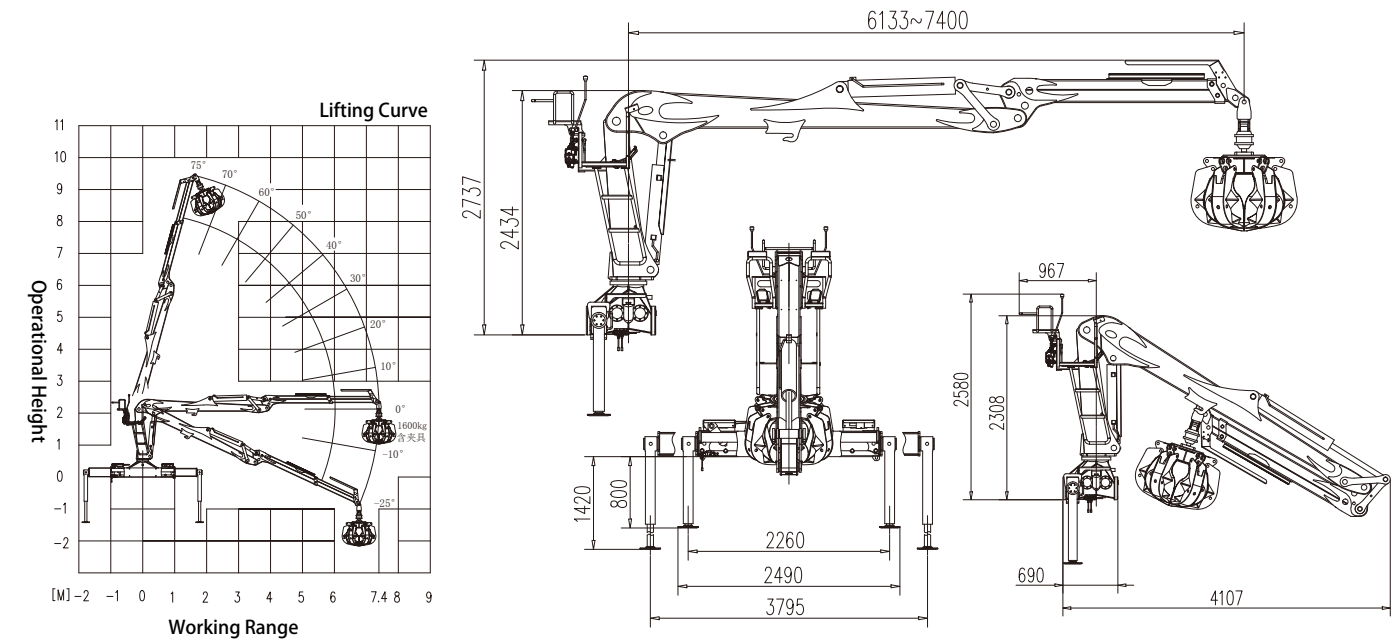
ZT120Z-2A Outline Size Drawing Work Graph



ZT Series Steel (Material) Machine Parameters

Maximum Lifting Capacity (Including Fixtures)	1600 Kg	Fuel Tank Capacity	250 L
Maximum Lifting Torque	15 Ton.m	Rotation Angle	380 °
Recommended Power	40 KW	Crane Dead Weight	2500 Kg
Hydraulic System Flow	80 L/Min	Installation Space	850 mm
Hydraulic System Pressure	26 Mpa		

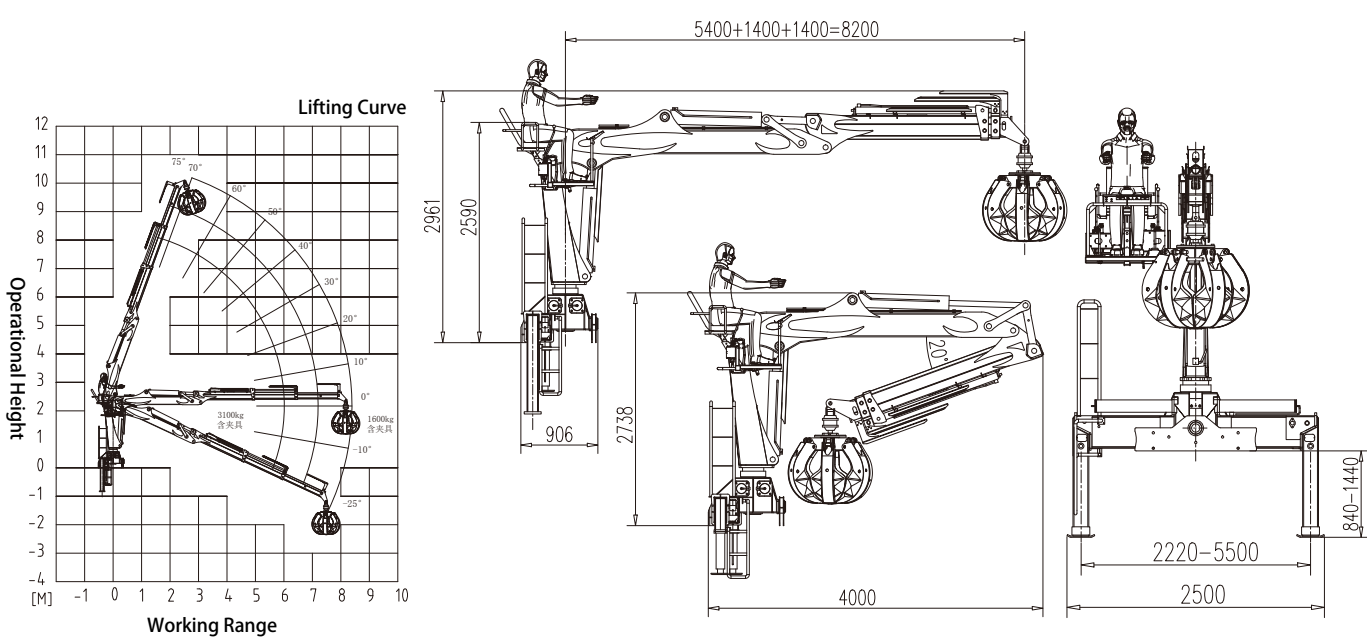
ZT150Z-1A Outline Size Drawing Work Graph



ZT Series Steel (Material) Machine Parameters

Maximum Lifting Capacity (Including Fixtures)	1600 Kg	Fuel Tank Capacity	220 L
Maximum Lifting Torque	16 Ton.m	Rotation Angle	380 °
Recommended Power	45 KW	Crane Dead Weight	3200 Kg
Hydraulic System Flow	80 L/Min	Installation Space	1000 mm
Hydraulic System Pressure	28 Mpa		

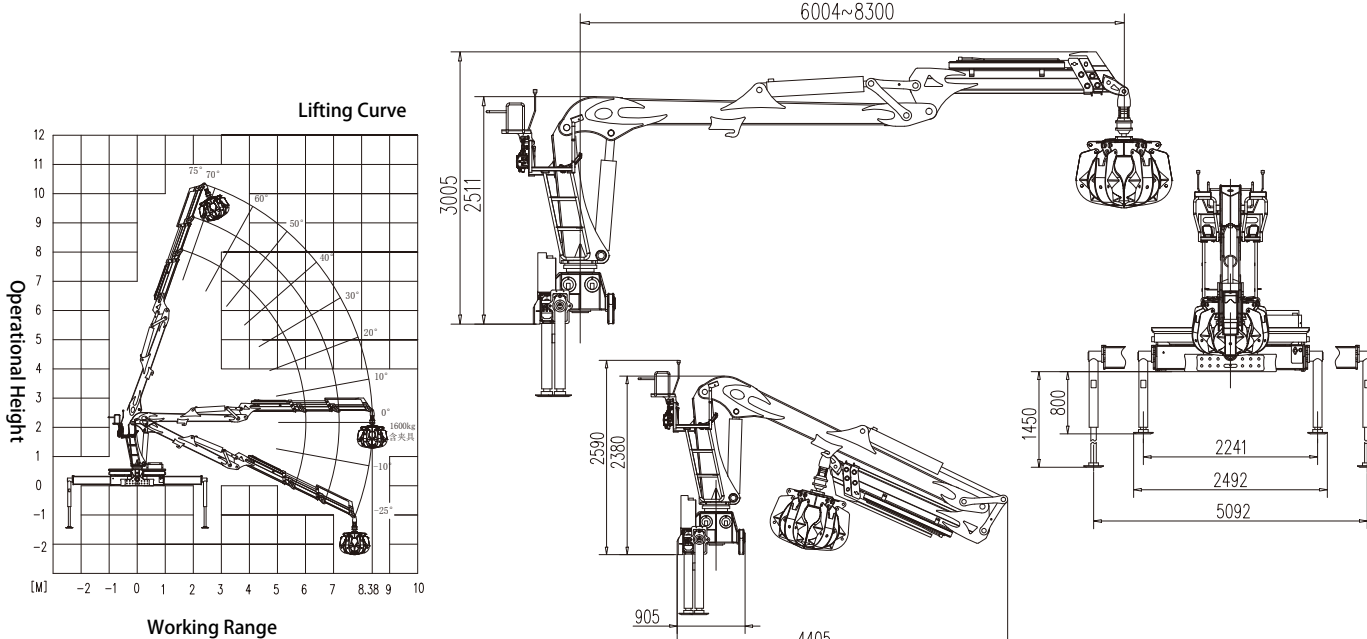
ZT160Z-2A Outline Size Drawing Work Graph



ZT Series Steel (Material) Machine Parameters

Maximum Lifting Capacity (Including Fixtures)	1600 Kg	Fuel Tank Capacity	250 L
Maximum Lifting Torque	16 Ton.m	Rotation Angle	380 °
Recommended Power	45 KW	Crane Dead Weight	2750 Kg
Hydraulic System Flow	80 L/Min	Installation Space	850 mm
Hydraulic System Pressure	28 Mpa		

ZT160Z-2Q Outline Size Drawing Work Graph



Fuman Gooseneck Fixed Grabbing Machine

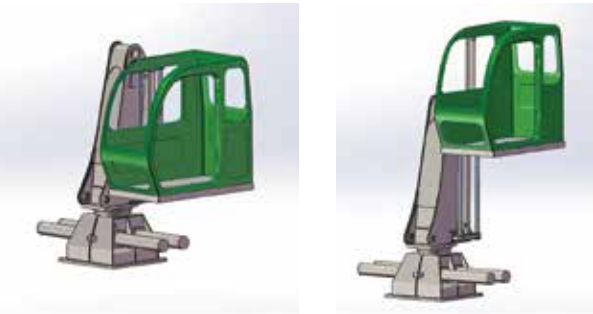
Product introduction

Goose neck type fixed telescopic steel grab machine is designed and manufactured for scrap steel, dangerous goods, dock, paper mill, forestry, sand factory and other industries to grab, load and unload, sort, reduce the shortage of manpower and loading and unloading intensity, improve the efficiency of loading and unloading vehicles.

Product advantages

- Foreman gooseneck type fixed steel grab imported foreign technology, compact structure, light weight, reasonable and beautiful design.
- Hydraulic system: Goose neck type fixed steel grab machine adopts imported hydraulic parts, load sensitive multi-way control valve, which can realize multiple actions at the same time compound linkage action, better maneuverability, more accurate grab, greatly improve loading and unloading efficiency and save costs.
- Oil pump: steel grabbing machine adopts imported inclined shaft plunger oil pump, stable operation, high efficiency and long service life.
- Double rack oil cylinder is adopted for rotation of steel grabbing machine, which has large torque, stable rotation, better impact resistance, long service life and more convenient maintenance.
- A variety of fixture configuration options: electric chuck, shell fixture, plum blossom fixture (6 petals) 3+2 fixture, to meet customer needs for a variety of operations.
- Large view lift cab high-power air conditioning cooling and heating effect is better, cab lift function to ensure a panoramic view of the work area, operator high-level operation, wider vision, more transparent and brighter.

Lift cab operating system



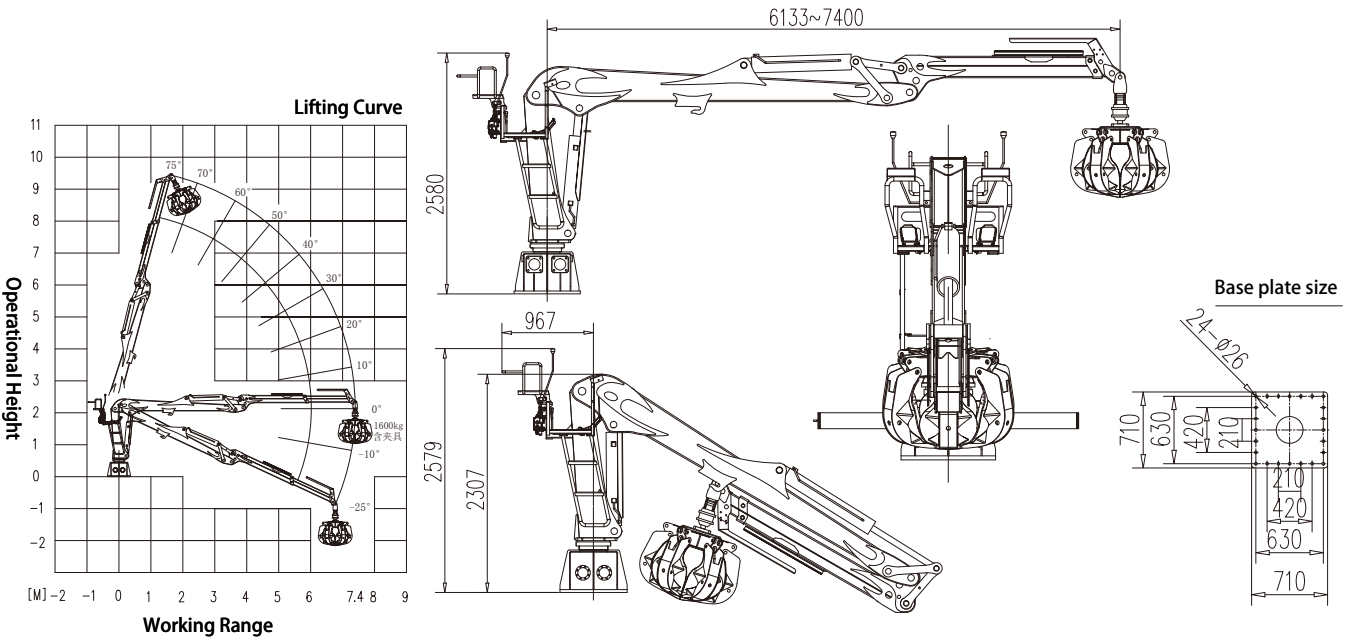
Product application



ZT Series Steel (Material) Machine Parameters

Maximum Lifting Capacity (Including Fixtures)	1600 Kg	Fuel Tank Capacity	250 L
Maximum Lifting Torque	15 Ton.m	Rotation Angle	380 °
Recommended Power	40 KW	Crane Dead Weight	2300 Kg
Hydraulic System Flow	80 L/Min	Installation Space	850 mm
Hydraulic System Pressure	26 Mpa		

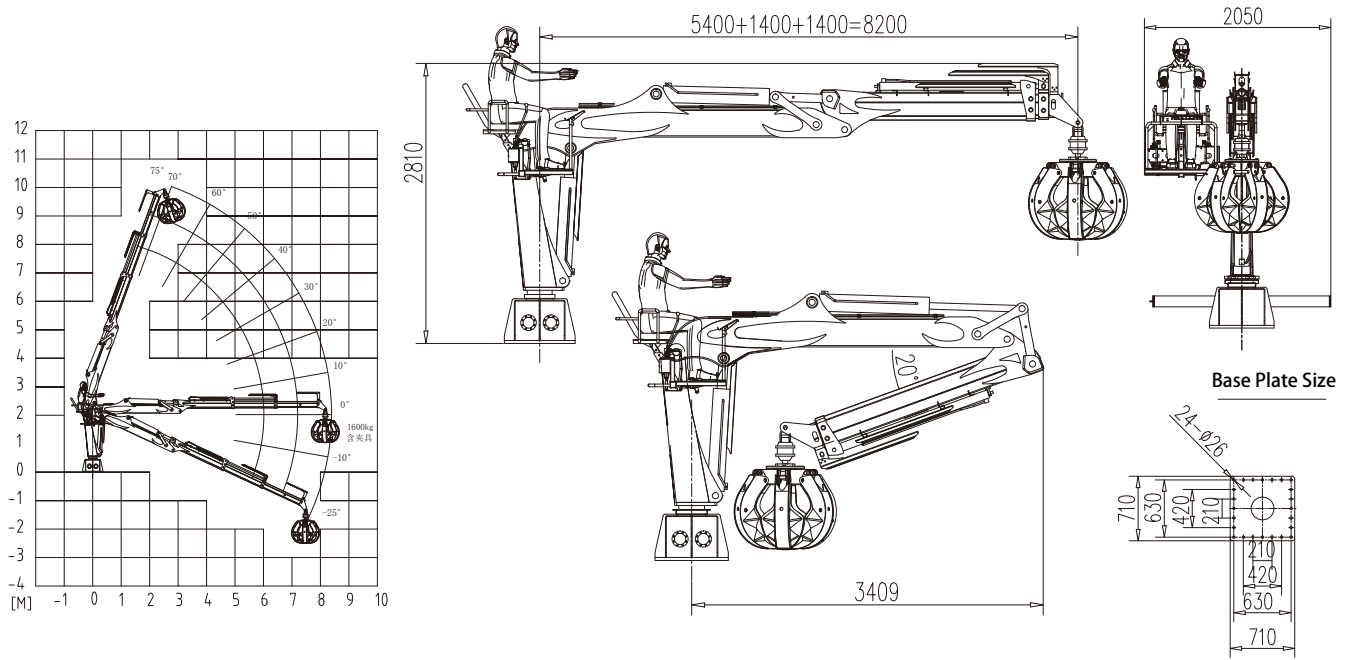
ZT150Z-1AT Outline Size Drawing Work Graph



ZT Series Steel (Material) Machine Parameters

Maximum Lifting Capacity (Including Fixtures)	1600 Kg	Fuel Tank Capacity	250 L
Maximum Lifting Torque	16 Ton.m	Rotation Angle	380 °
Recommended Power	45 KW	Crane Dead Weight	2450 Kg
Hydraulic System Flow	80 L/Min	Installation Space	1000 mm
Hydraulic System Pressure	28 Mpa		

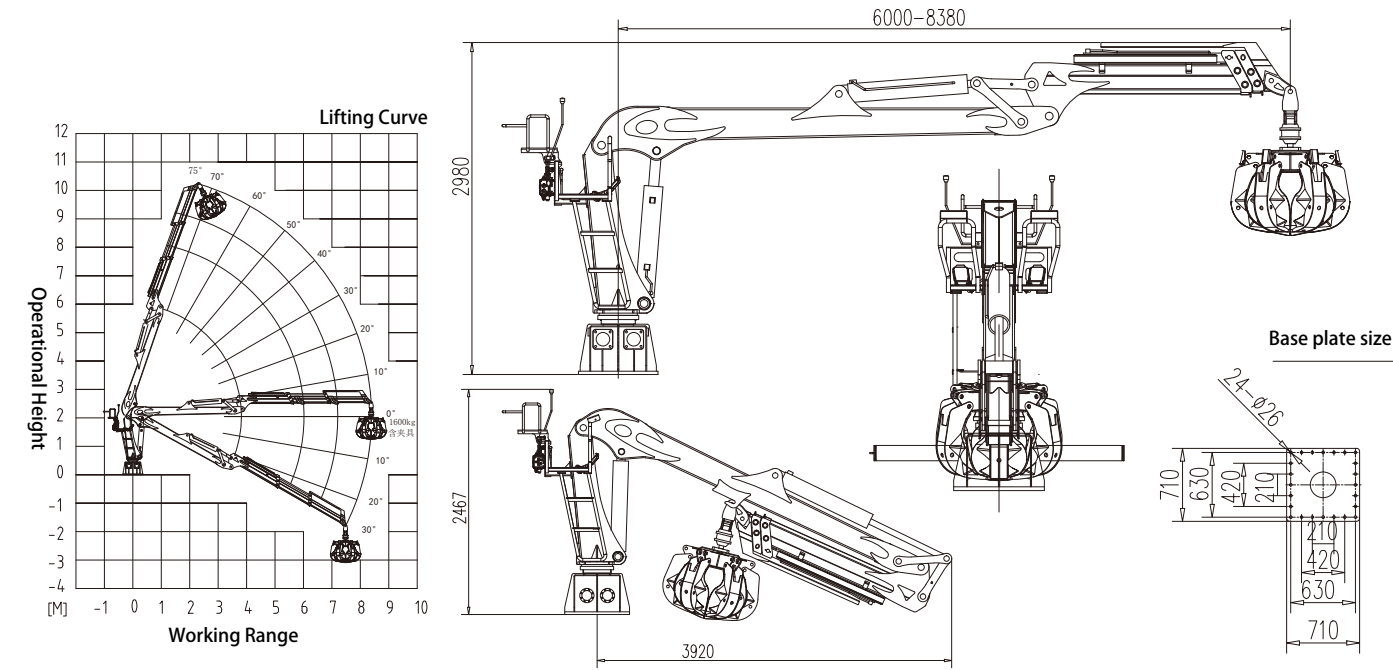
ZT160Z-2AT Outline Size Drawing Work Graph



ZT Series Steel (Material) Machine Parameters

ZT120Z-2A Outline Size Drawing Work Graph

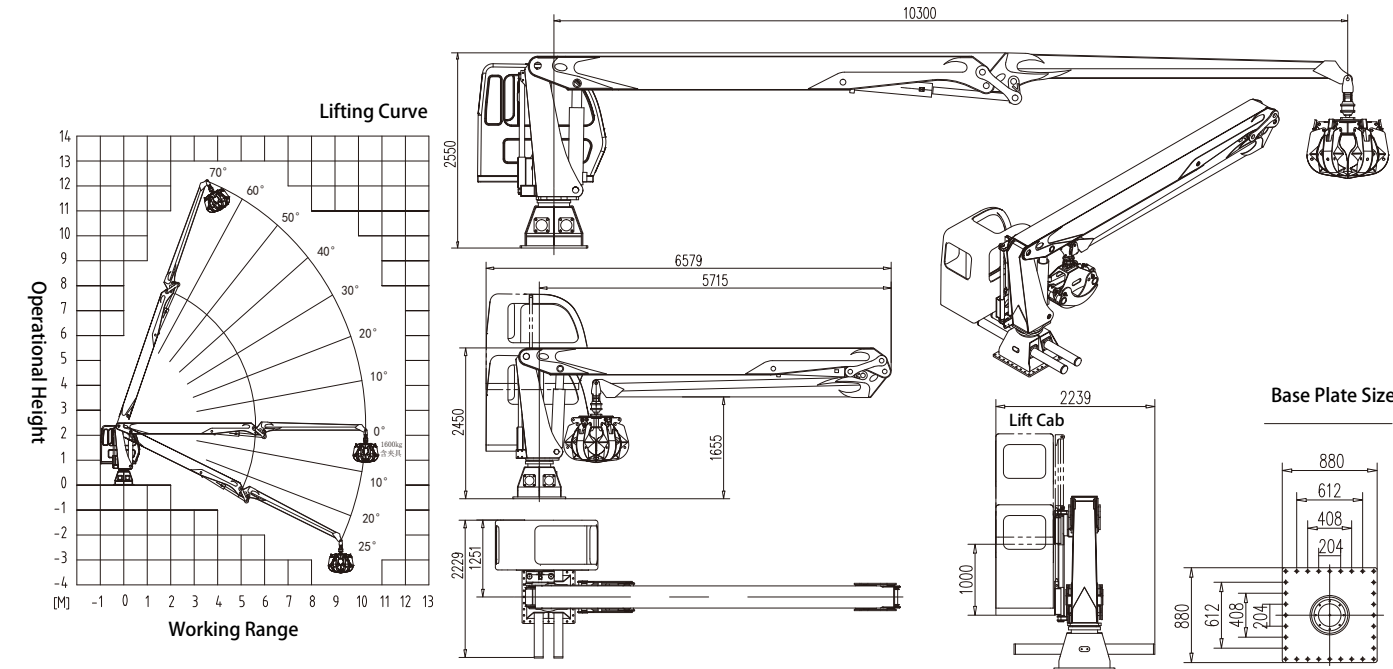
Maximum Lifting Capacity (Including Fixtures)	1600 Kg	Fuel Tank Capacity	250 L
Maximum Lifting Torque	16 Ton.m	Rotation Angle	380 °
Recommended Power	45 KW	Crane dead Weight	2400 Kg
Hydraulic System Flow	80 L/Min	Installation Space	1000 mm
Hydraulic System Pressure	28 Mpa		



ZT Series Steel (Material) Machine Parameters

ZT150Z-1A Outline Size Drawing Work Graph

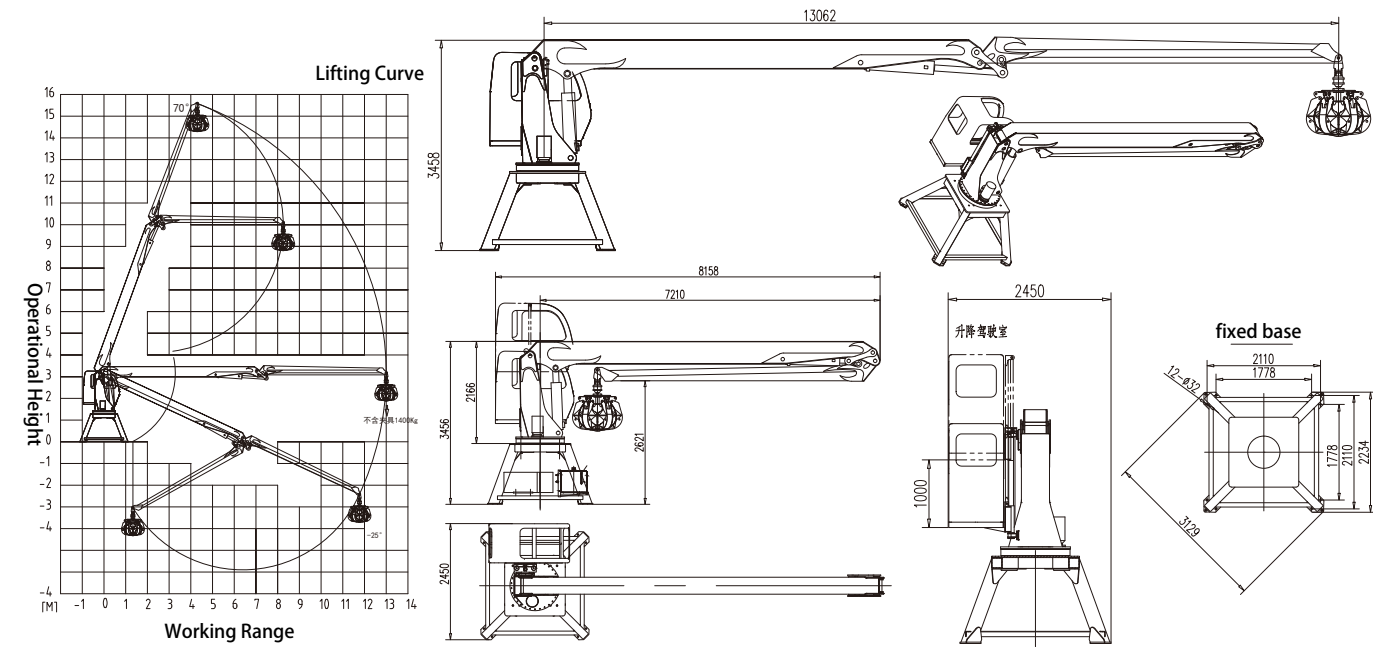
Maximum Lifting Capacity (Including Fixtures)	1600 Kg	Fuel Tank Capacity	250 L
Maximum Lifting Torque	27 Ton.m	Rotation Angle	380 °
Recommended Power	45 KW	Crane dead Weight	4000 Kg
Hydraulic System Flow	90 L/Min	Installation Space	2300 mm
Hydraulic System Pressure	26 Mpa		



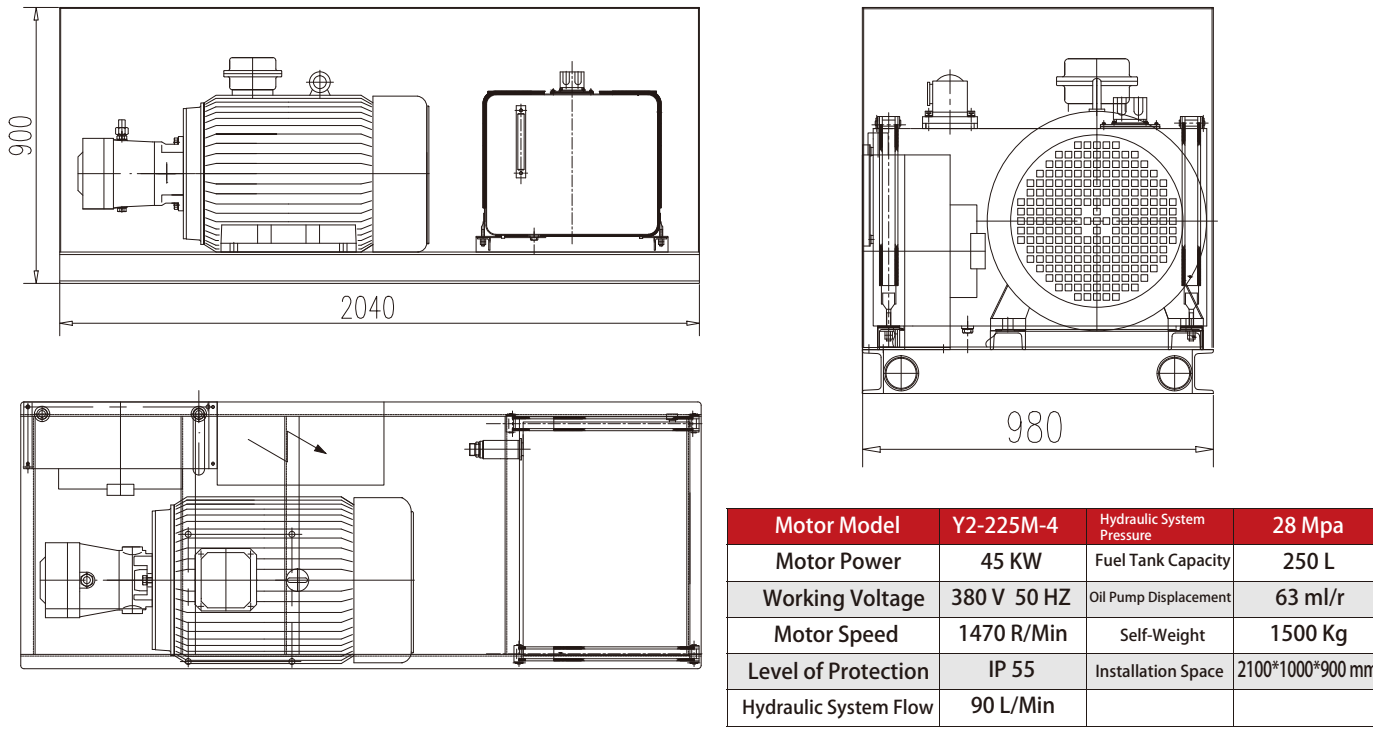
ZT Series Steel (Material) Machine Parameters

ZT370Z-A Outline Size Drawing Work Graph

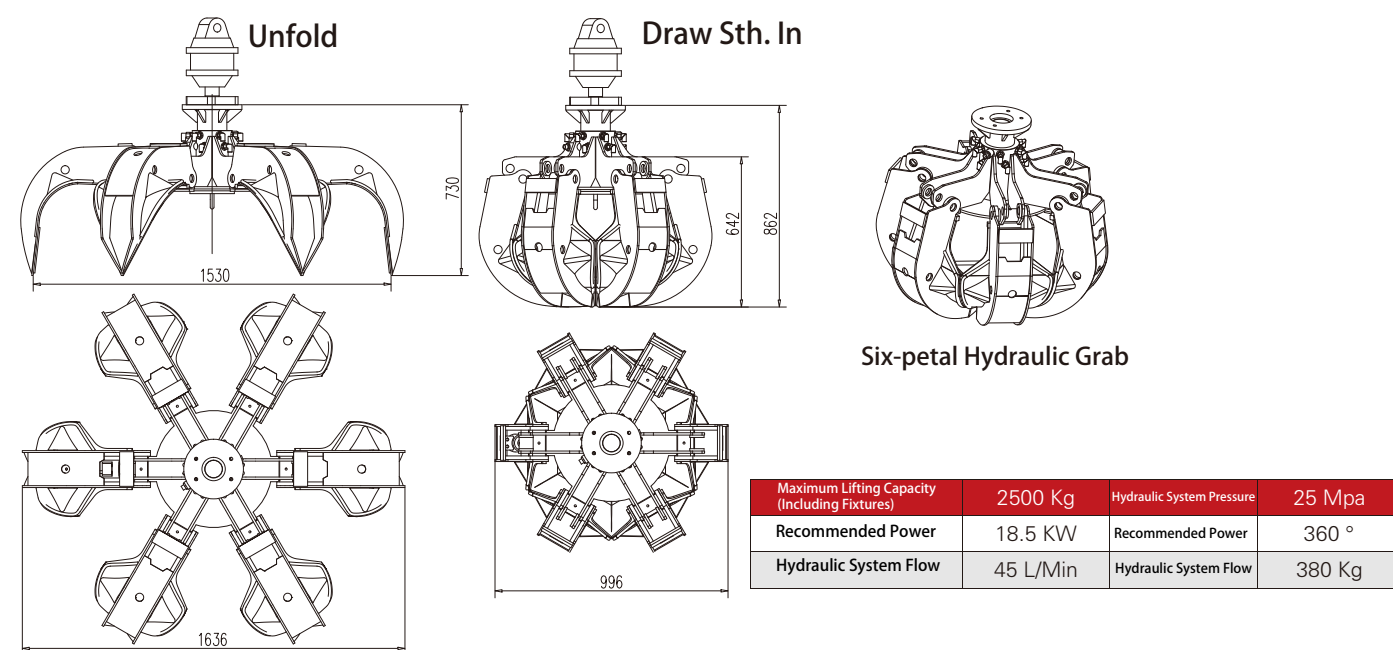
Maximum Lifting Capacity (Including Fixtures)	1600 Kg	Fuel Tank Capacity	300 L
Maximum Lifting Torque	37 Ton.m	Rotation Angle	380 °
Recommended Power	55 KW	Crane dead Weight	4950 Kg
Hydraulic System Flow	110 L/Min	Installation Space	2300 mm
Hydraulic System Pressure	28 Mpa		



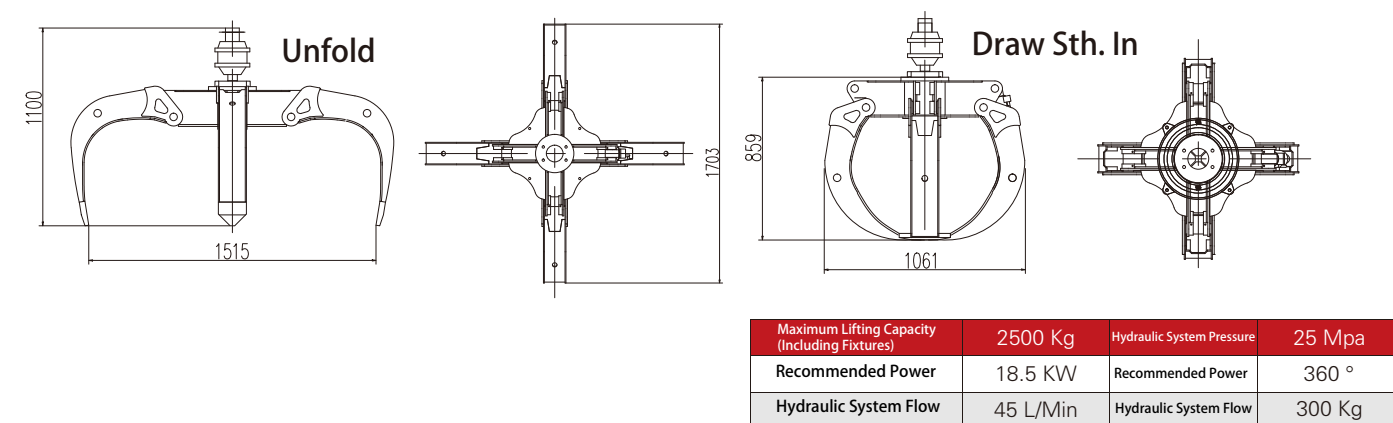
ZT Series Steel (Material) Machine Dedicated Hydraulic Station Parameters



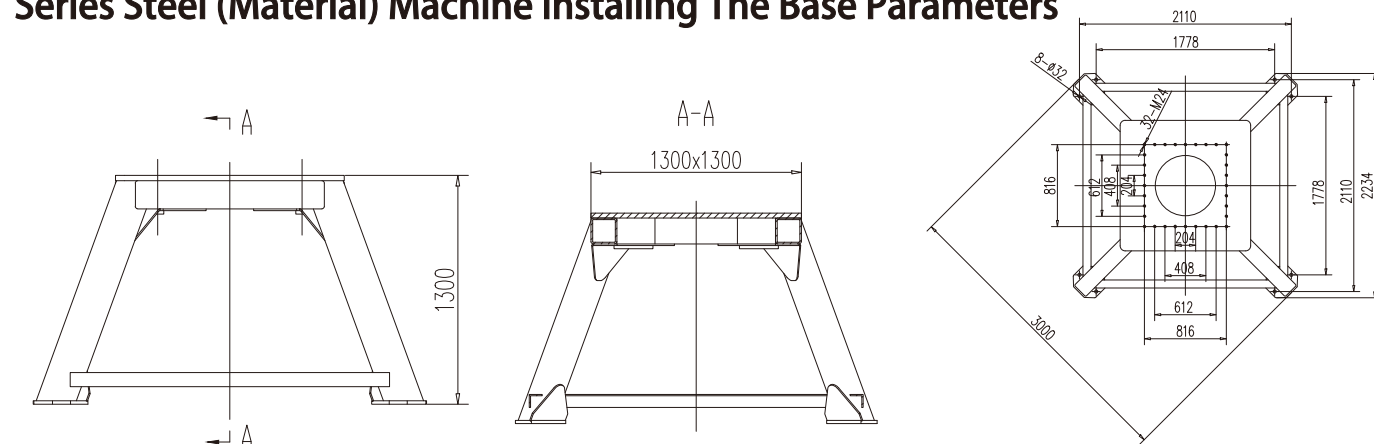
ZT Series Steel (Material) Grab Six-flap Grab Parameters



ZT Series Steel (Material) Machine Four Petal Grab Bucket Parameters



ZT Series Steel (Material) Machine Installing The Base Parameters



SL-ZM Forestry (Bamboo And Wood) Machine Parameters

Product introduction

Forestry (bamboo) vehicle grab is a safe and efficient special product, suitable for forestry trees, bamboo, sugar cane, garbage classification and other industries at home and abroad, reducing manpower shortage and loading and unloading intensity, greatly improving the efficiency of loading and unloading trucks, saving time and manpower, supporting customized exclusive fixtures, solving more industry loading and unloading difficulties, increasing economic benefits.

Product advantages

- Forman SL series-ZM series intelligent forestry (bamboo) vehicle grab, using three-dimensional design software, force analysis and simulation of the product to ensure product safety and reliability, integrated double cross operation valve system (one control three), to achieve consistent action, flexible, fast, high efficiency, better control, grab better.
- Two-lobed fixture has large opening, 360° rotation, arc shape to reduce fixture and bamboo resistance and wear, grab no dead angle, more durable and labor-saving.

Product application



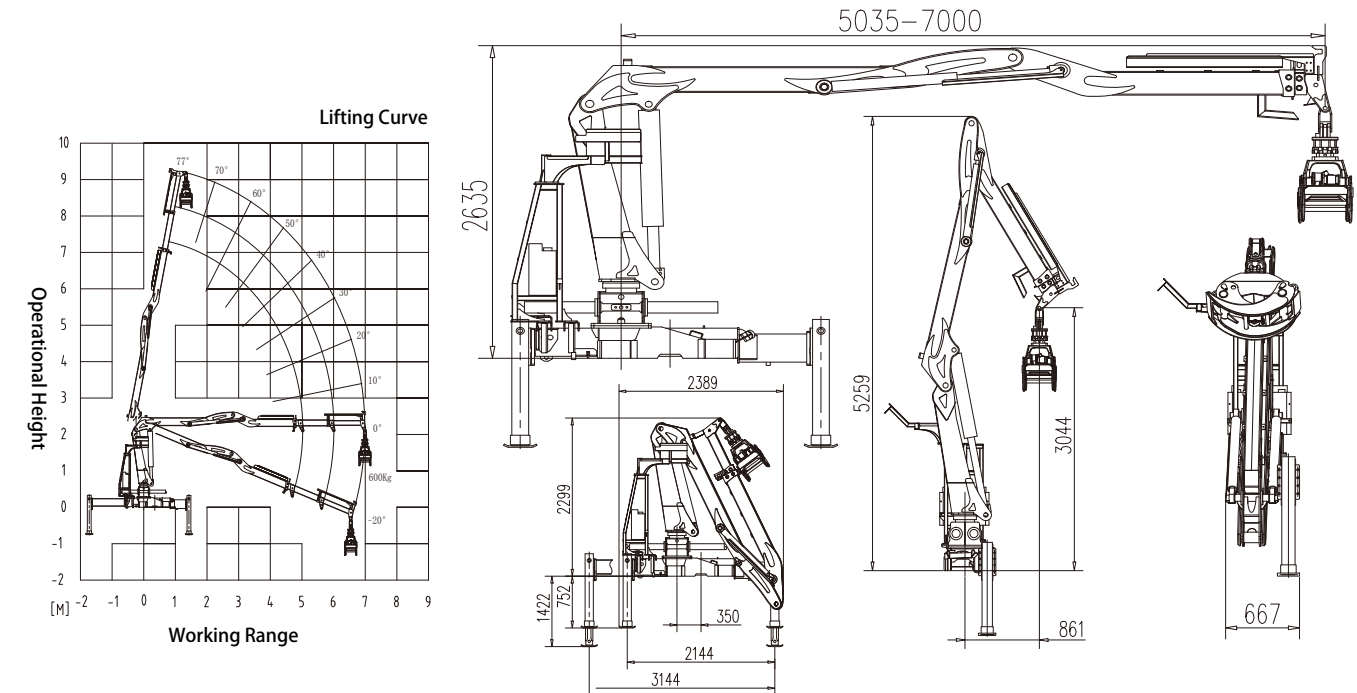
SL Series Forestry (Bamboo And Wood) Machine Parameters

SL70Z-2B

Outline Size Drawing

Work Graph

Maximum Lifting Capacity (Including Fixtures)	600 Kg	Fuel Tank Capacity	100 L
Maximum Lifting Torque	7.0 Ton.m	Rotation Angle	380 °
Recommended Power	18 KW	Crane Dead Weight	1650 Kg
Hydraulic System Flow	45 L/Min	Installation Space	680 mm
Hydraulic System Pressure	20 Mpa		



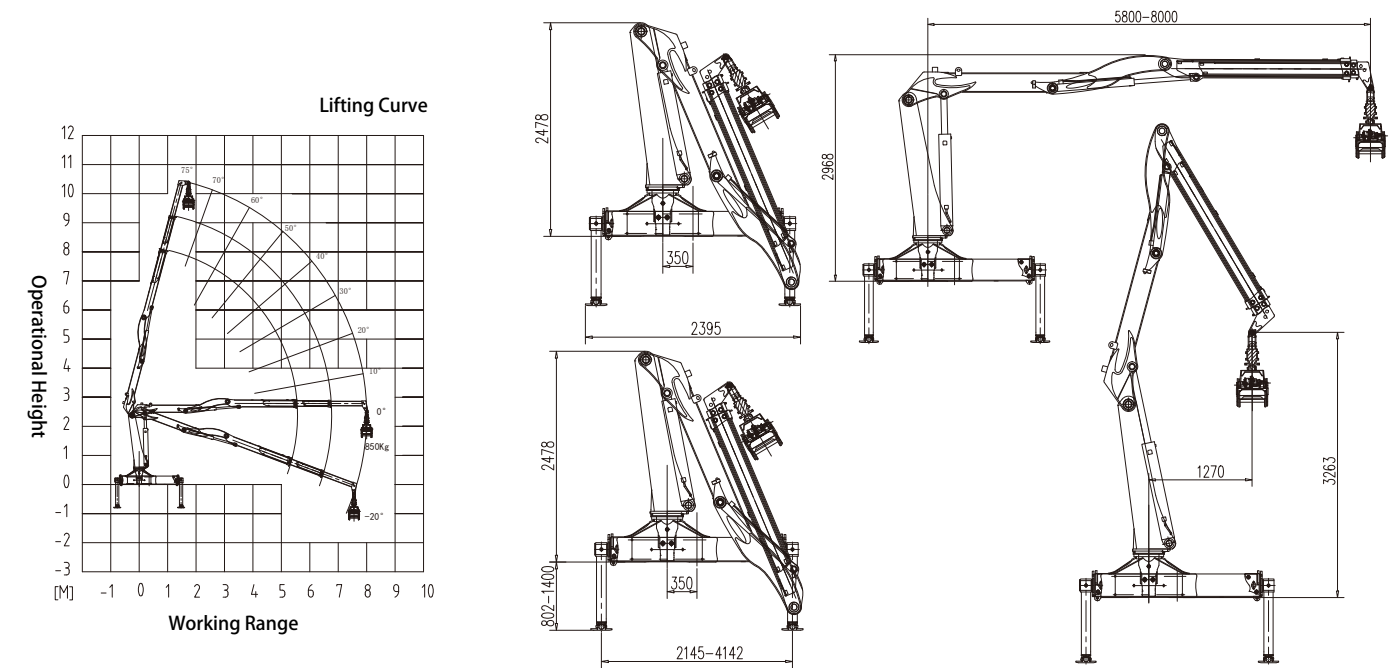
SL Series Forestry (Bamboo And Wood) Machine Parameters

SL130Z-2A

Outline Size Drawing

Work Graph

Maximum Lifting Capacity	850 Kg	Fuel Tank Capacity	160 L
Maximum Lifting Torque	13 Ton.m	Rotation Angle	400 °
Recommended Power	28 KW	Crane Dead Weight	2200 Kg
Hydraulic System Flow	55 L/Min	Installation Space	920 mm
Hydraulic System Pressure	25 Mpa		



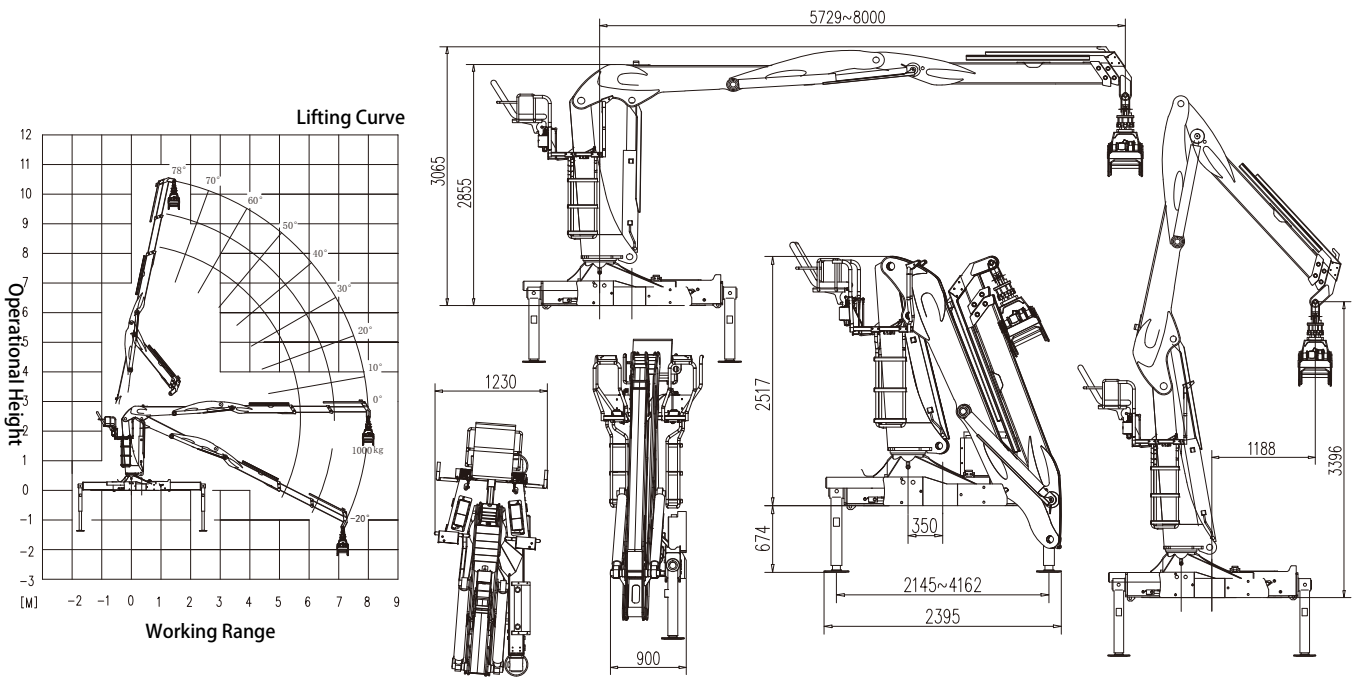
SL Series Forestry (Bamboo And Wood) Machine Parameters

SL150Z-2A

Outline size drawing

work graph

Maximum Lifting Capacity (Including Fixtures)	1000 Kg	Fuel Tank Capacity	180 L
Maximum Lifting Torque	15 Ton.m	Rotation Angle	380 °
Recommended Power	37 KW	Crane Dead Weight	2650 Kg
Hydraulic System Flow	60 L/Min	Installation Space	1000 mm
Hydraulic System Pressure	25 Mpa		



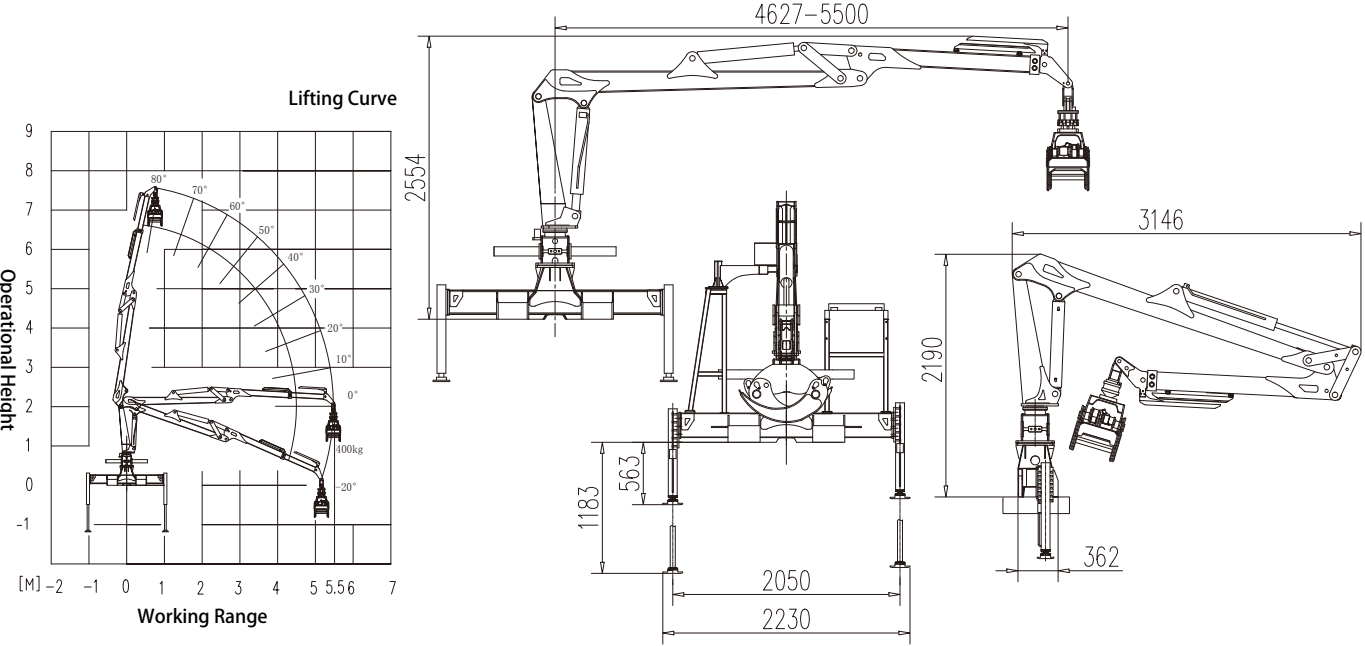
ZM Series Forestry (Bamboo And Wood) Machine Parameters

ZM55-1A

Outline Size Drawing

Work Graph

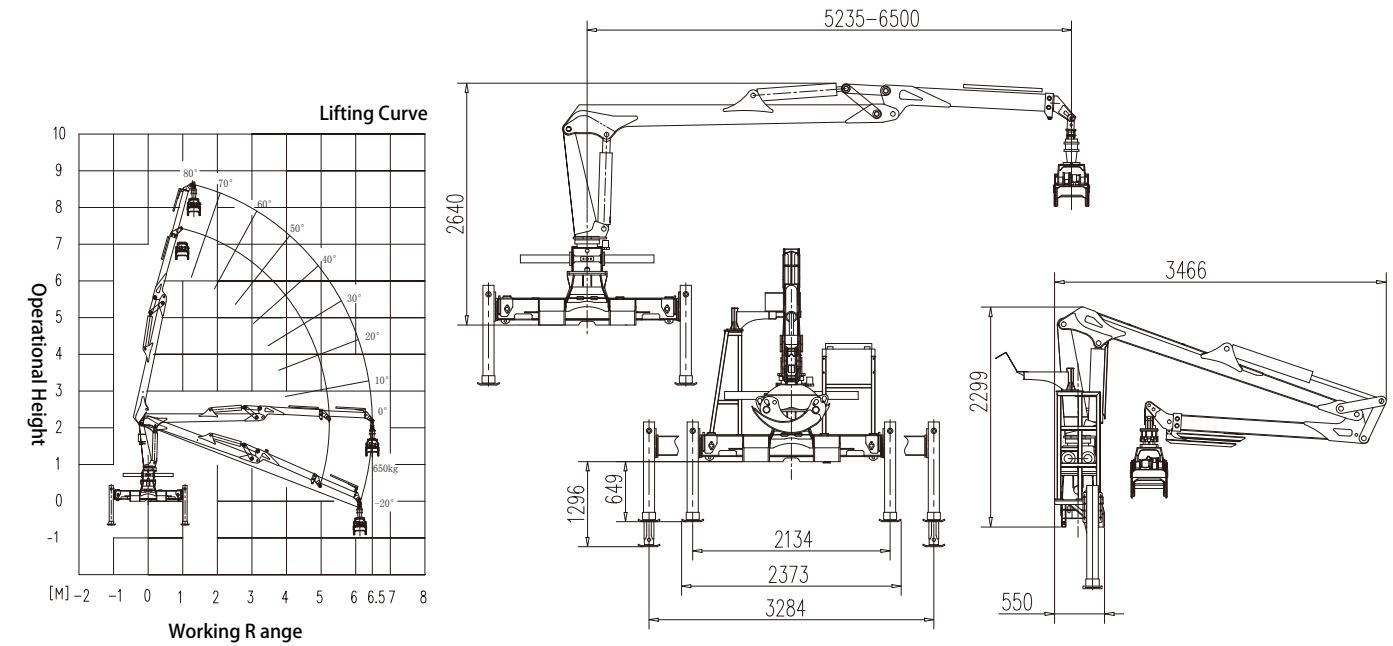
Maximum Lifting Capacity (Including Fixtures)	400 Kg	Fuel Tank Capacity	60 L
Maximum Lifting Torque	6 Ton.m	Rotation Angle	380 °
Recommended Power	15 KW	Crane Dead Weight	1000 Kg
Hydraulic System Flow	45 L/Min	Installation Space	450 mm
Hydraulic System Pressure	20 Mpa		



ZM Series Forestry (Bamboo And Wood)
Machine Parameters

ZM65-1B Outline Size Drawing Work Graph

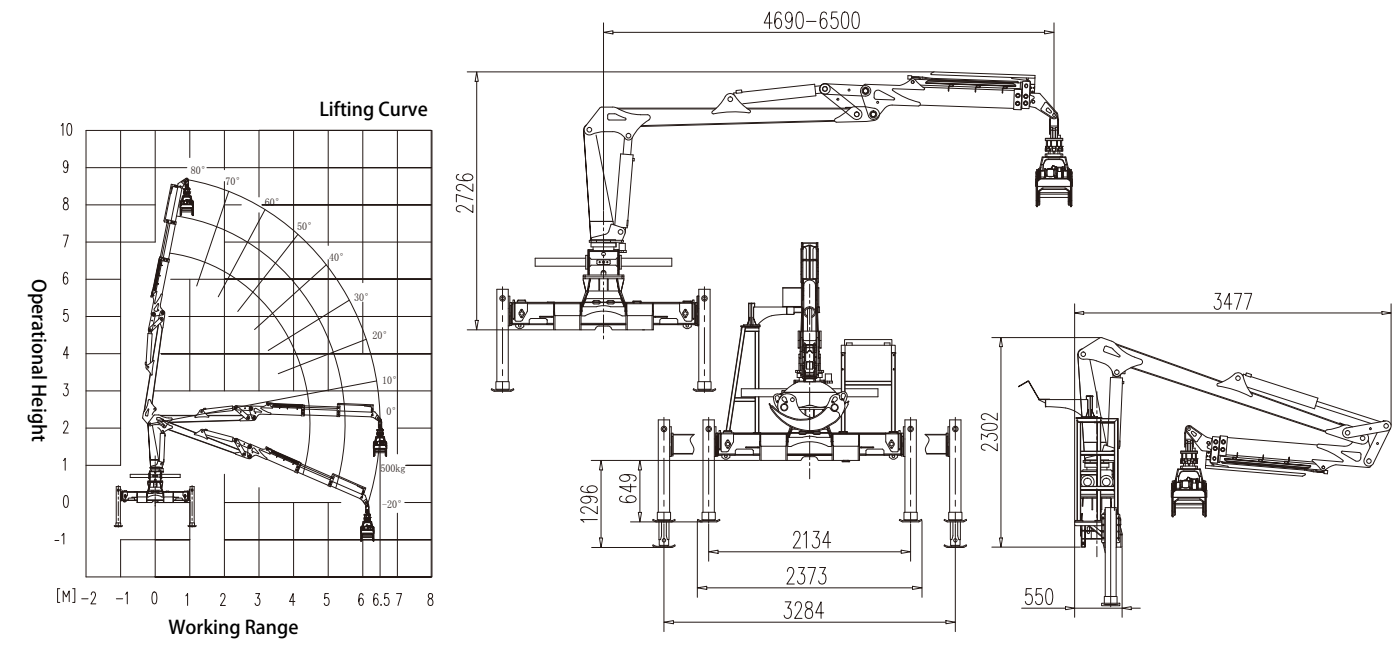
Maximum Lifting Capacity (Including Fixtures)	650 Kg	Fuel Tank Capacity	80 L
Maximum Lifting Torque	6.6 Ton.m	Rotation Angle	380 °
Recommended Power	20 KW	Crane Dead Weight	1200 Kg
Hydraulic System Flow	55 L/Min	Installation Space	550 mm
Hydraulic System Pressure	20 Mpa		



ZM Series Forestry (Bamboo And Wood)
Machine Parameters

ZM65-2B Outline Size Drawing Work Graph

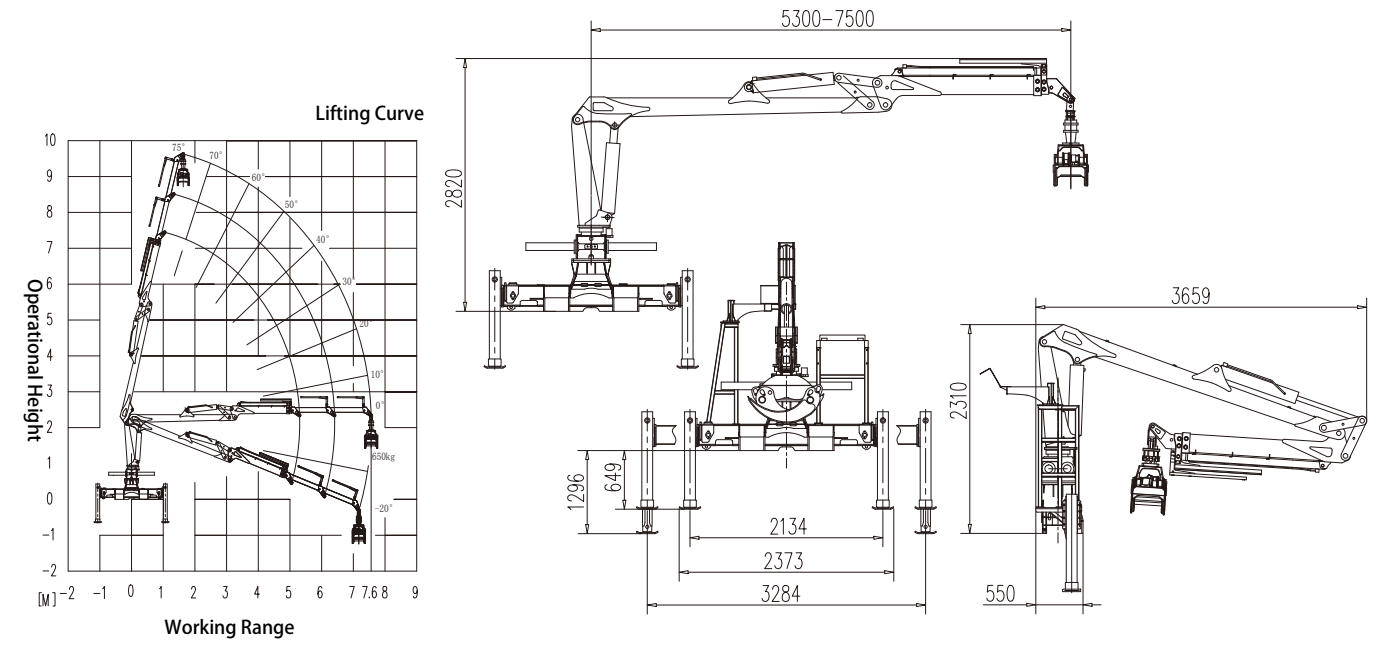
Maximum Lifting Capacity (Including Fixtures)	500 Kg	Fuel Tank Capacity	100 L
Maximum Lifting Torque	6.6 Ton.m	Rotation Angle	380 °
Recommended Power	20 KW	Crane Dead Weight	1280 Kg
Hydraulic System Flow	55 L/Min	Installation Space	550 mm
Hydraulic System Pressure	20 Mpa		



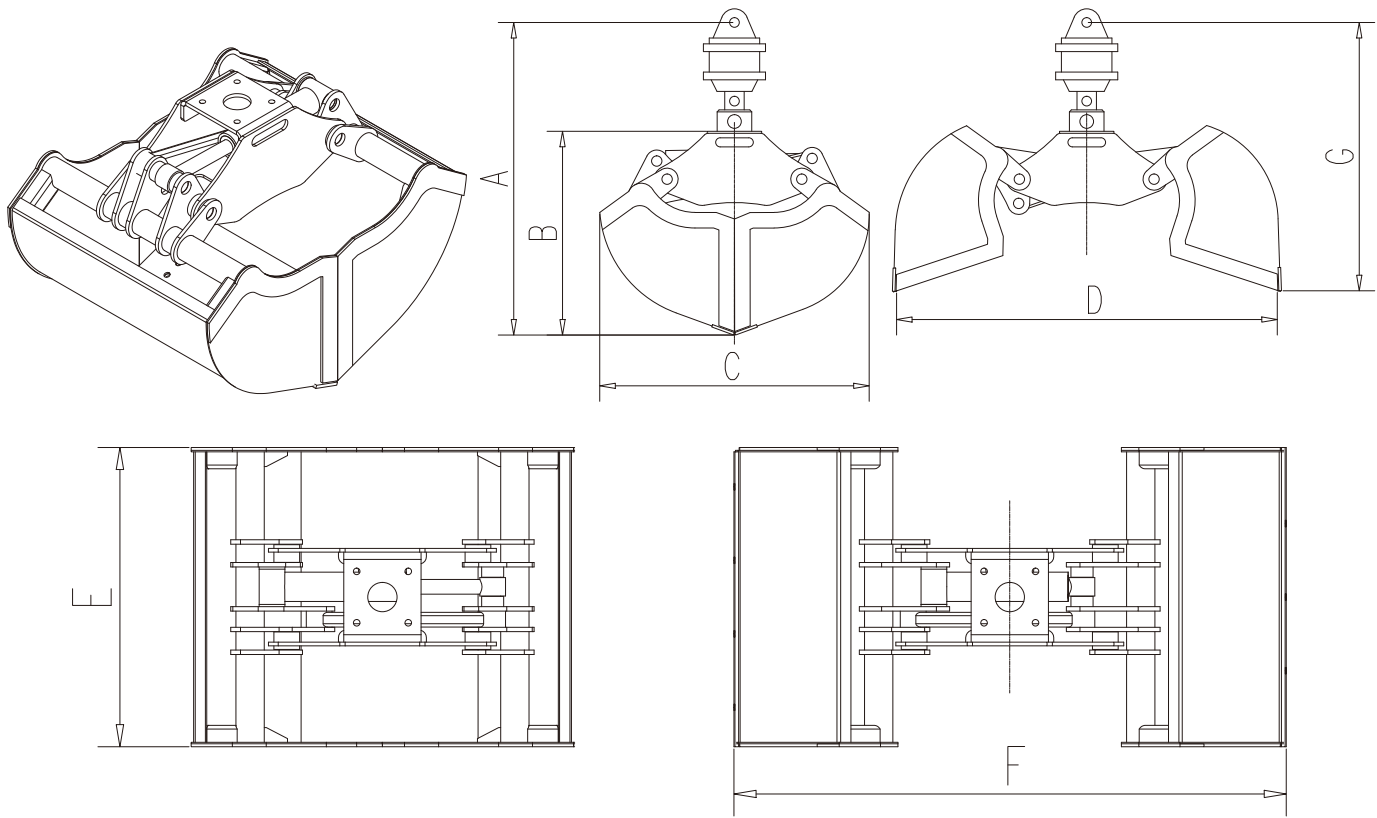
ZM Series Forestry (Bamboo And Wood)
Machine Parameters

ZM75-2B Outline Size Drawing Work Graph

Maximum Lifting Capacity (Including Fixtures)	650 Kg	Fuel Tank Capacity	100 L
Maximum Lifting Torque	7.5 Ton.m	Rotation Angle	380 °
Recommended Power	20 KW	Crane Dead Weight	1400 Kg
Hydraulic System Flow	55 L/Min	Installation Space	500 mm
Hydraulic System Pressure	20 Mpa		



Shell Style Hydraulic Grab Bucket



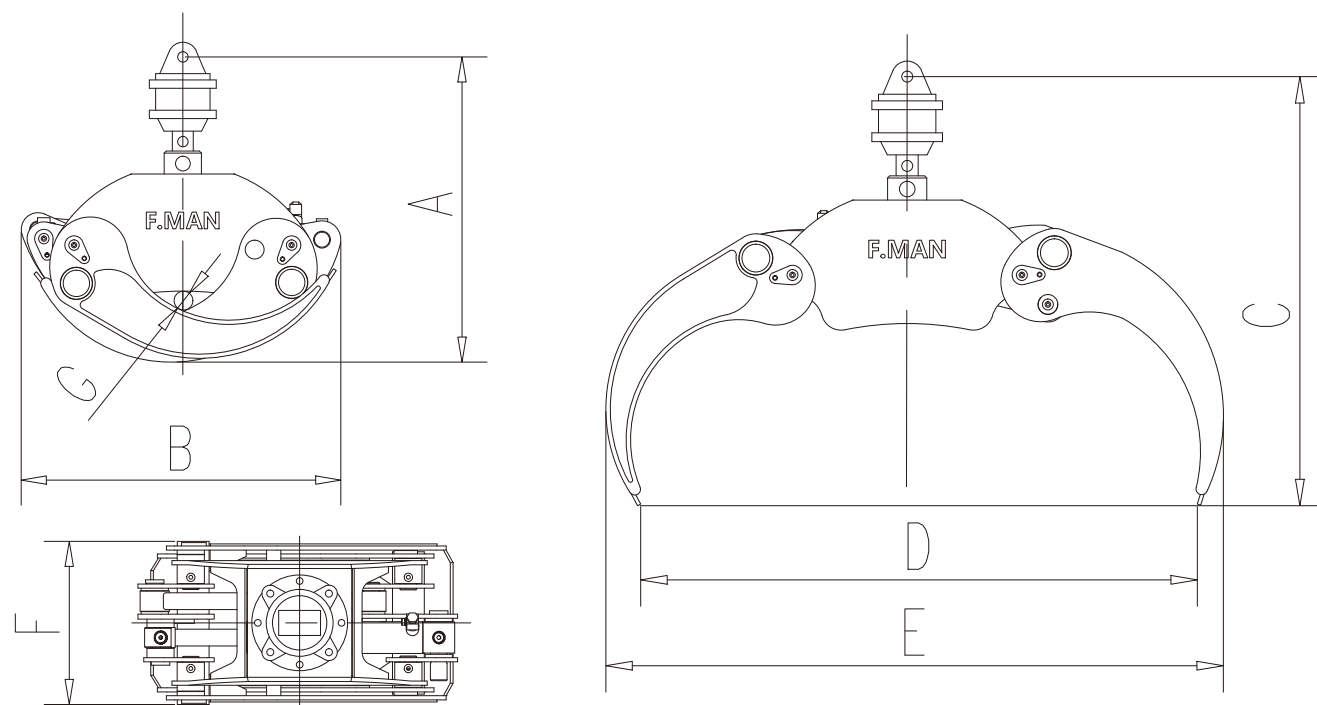
Main Ttechnical Parameters

Fixture Model	Maximum Grab Weight	Maximum Grab Volume	MWP (maximumworking pressure)	Workflow	Rotation Angle	Dead Weight Of Fixture
F1470-BK	1500KG	0.4m³	25 Mpa	40 L/Min	360°	290KG
F1730-BK	2500KG	0.7m³	25 Mpa	50 L/Min	360°	380KG

Outline size

Fixture Model	A	B	C	D	E	F	G
F1470-BK	1250	800	1050	1470	820	1520	1080
F1730-BK	1420	920	1215	1730	1220	1770	1190

Fmj Series Hydraulic Gripper



Main Technical Parameters

Fixture Model	Maximum Grab Weight	MWP (Maximum Working Pressure)	Workflow	Dead Weight Of Fixture	Rotation Angle
FMJ-1350	650KG	25 Mpa	25 L/Min	150KG	360°
FMJ-1500	1000KG	25 Mpa	30 L/Min	190KG	360°
FMJ-1800	1500KG	25 Mpa	35 L/Min	230KG	360°

Outline Size

Fixture model	A	B	C	D	E	F	G
FMJ-1350	750	790	980	1350	1490	380	65
FMJ-1500	850	900	1080	1500	1685	470	78
FMJ-1800	1150	970	1160	1800	1920	530	125

SQ Series Palm Gripper Parameters

Maximum Lifting Capacity (Including Fixtures)	100 Kg	Fuel Tank Capacity	50 L
Maximum Lifting Torque	1.0 Ton.m	Rotation Angle	330 °
Recommended Power	11 KW	Crane Dead Weight	460 Kg (Including Fixture)
Hydraulic System Flow	35 L/Min	Installation Space	600*700 mm
Hydraulic System Pressure	15 Mpa		

SQ025Z-1AT Outline Size Drawing Work Graph

